

STONEBRIDGE TRACT "N" REPLAT

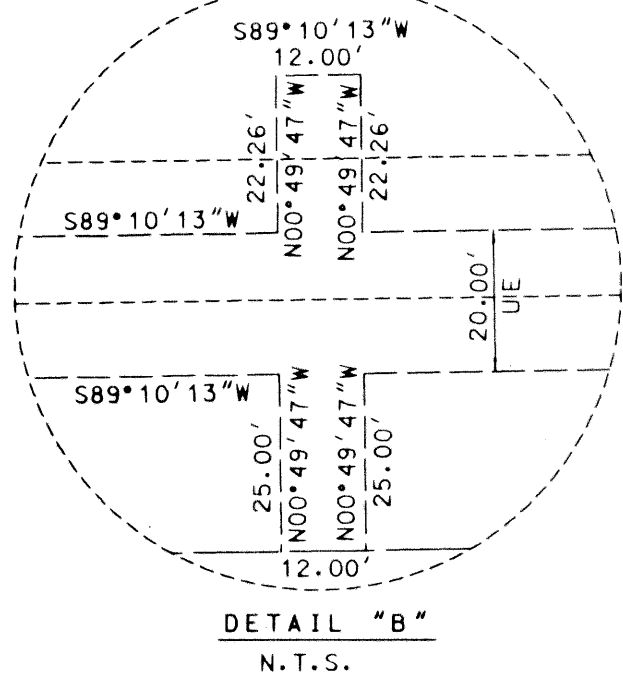
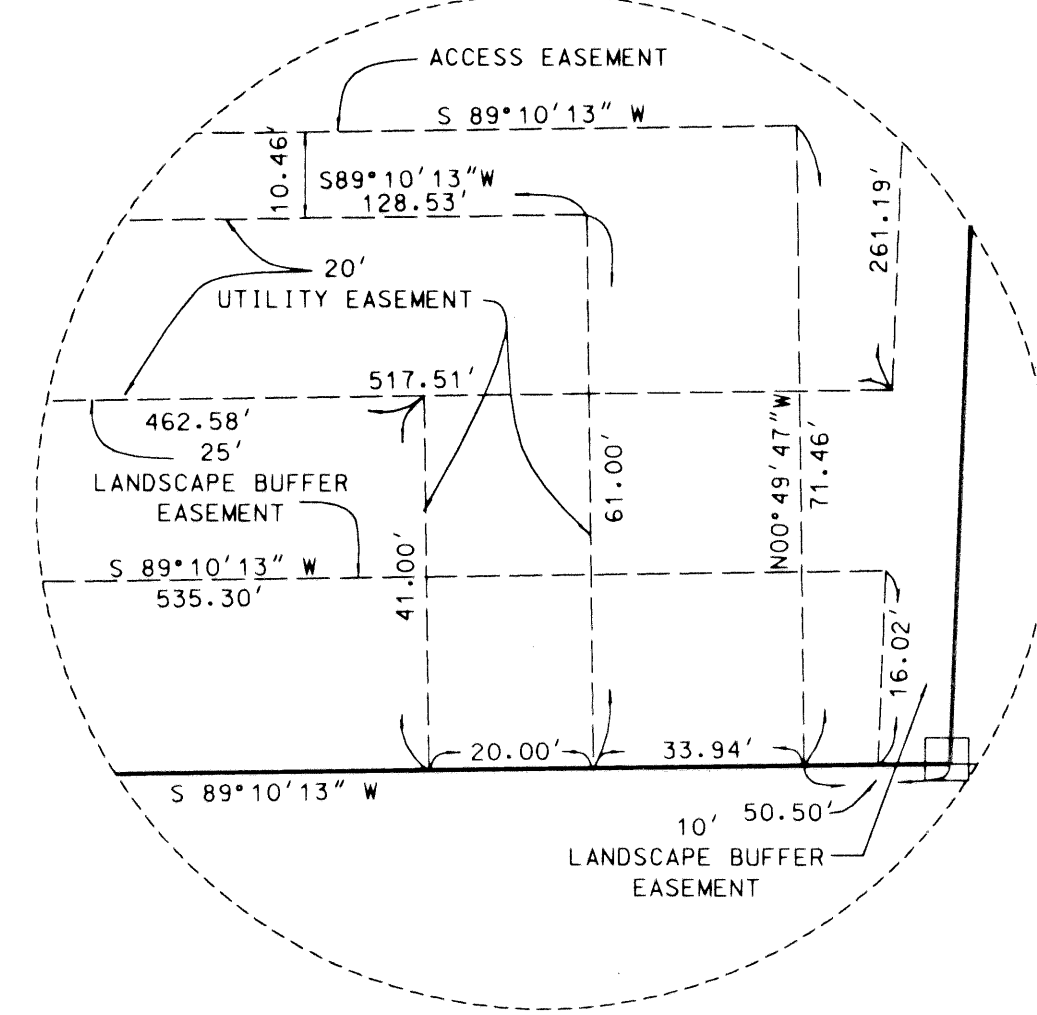
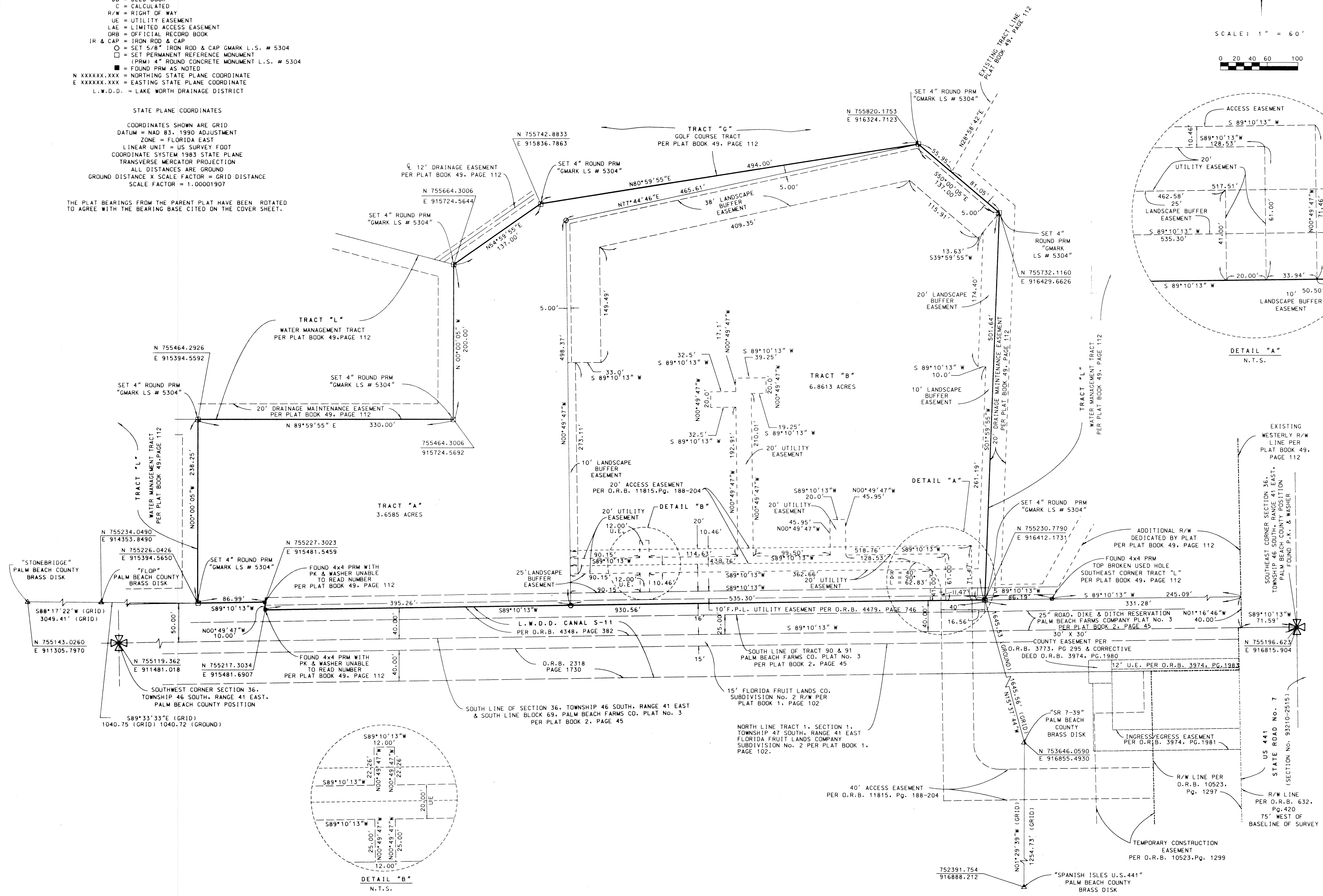
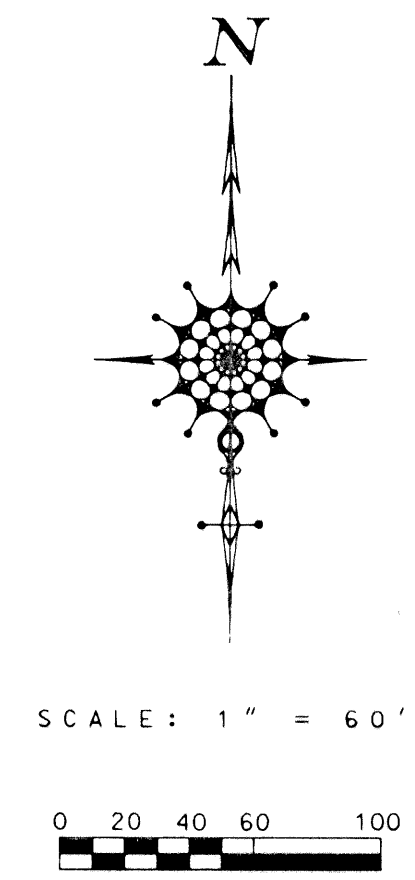
BEING A REPLAT OF ALL OF TRACT "N",
STONEBRIDGE PLAT NO. 1 (A PLANNED UNIT DEVELOPMENT) AS RECORDED
IN PLAT BOOK 49, PAGE 112 OF THE PUBLIC RECORDS OF PALM BEACH COUNTY, FLORIDA,
LYING IN SECTION 36, TOWNSHIP 46 SOUTH, RANGE 41 EAST, PALM BEACH COUNTY, FLORIDA

- LEGEND**
- R = RADIUS
 - Δ = CENTRAL ANGLE
 - L = ARC LENGTH
 - FD = FOUND
 - PG = PAGE
 - C = CENTERLINE
 - PB = PLAT BOOK
 - DB = DEED BOOK
 - C = CALCULATED
 - R/W = RIGHT OF WAY
 - UE = UTILITY EASEMENT
 - LAE = LIMITED ACCESS EASEMENT
 - ORB = OFFICIAL RECORD BOOK
 - IR & CAP = IRON ROD & CAP
 - = SET 5/8" IRON ROD & CAP G.MARK L.S. # 5304
 - = SET PERMANENT REFERENCE MONUMENT (PRM) 4" ROUND CONCRETE MONUMENT L.S. # 5304
 - = FOUND PRM AS NOTED
 - N xxxxxx.xxx = NORTHERN STATE PLANE COORDINATE
 - E xxxxxx.xxx = EASTING STATE PLANE COORDINATE
 - L.W.D.D. = LAKE WORTH DRAINAGE DISTRICT

STATE PLANE COORDINATES

COORDINATES SHOWN ARE GRID
 DATUM = NAD 83, 1990 ADJUSTMENT
 ZONE = FLORIDA EAST
 LINEAR UNIT = US SURVEY FOOT
 COORDINATE SYSTEM 1983 STATE PLANE
 TRANSVERSE MERCATOR PROJECTION
 ALL DISTANCES ARE GROUND
 GROUND DISTANCE X SCALE FACTOR = GRID DISTANCE
 SCALE FACTOR = 1.00001907

THE PLAT BEARINGS FROM THE PARENT PLAT HAVE BEEN ROTATED
 TO AGREE WITH THE BEARING BASE CITED ON THE COVER SHEET.



**PALM BEACH COUNTY
 ENGINEERING AND PUBLIC WORKS**

ENGINEERING SERVICES

160 AUSTRALIAN AVENUE
 WEST PALM BEACH, FL 33406

SCALE: 1" = 60'
 APPROVED: C.W.M.
 DRAWN: A.B.F.
 CHECKED: W.C.E.
 DATE: 3/24/2000

**STONEBRIDGE TRACT "N"
 REPLAT**

DESIGN FILE NAME: p:\dgn\gmpc\k9809018.dgn
 DRAWING NO.: S-3-00-1399

SHEET: 2
 OF: 2
 PROJECT NO.: 98231

Subdivision Stonebridge Tract "N"
 Book 87
 Record Name 100B
 Block Zone B
 Quad # 67
 SE
 TAZ 1033
 FUD NAME 33498